



Midlothian ISD Multi-Purpose Stadium

1800 S. 14th Street, Midlothian, TX 76065



Stadium Information, Rules & Regulations

Director of Athletics: Todd York

Assistant Director of Athletics: Rusty Purser

Athletic Financial Administrative Assistant: April Potter

Athletic Administrative Assistant: Diane Barnes

About our Stadium

Stadium Seating

The stadium currently seats 8,700. The home side grandstands seat 4,850 including 1,100 reserved chair back seats. The visitor side grandstands seat 3,850. Wheelchair accessibility and viewing are on both sides.

Playing Surface

The field is a state-of-the-art Matrix Helix playing surface installed in the Summer of 2018.

Scoreboard/Sound System

The field features a 35'x 36' Daktronics scoreboard and features up to minute stats on the display panel.

Dressing Rooms

Home and Visitor dressing rooms are approximately 2,200 square feet. Each dressing room has 55 full size lockers available. Separate coaches' dressing, meeting, and training rooms are provided in each dressing room. Ice machines are also available.

Press Box

The press box is approximately 6,840 square feet with an elevator. The 2nd floor includes a press/scout area, coaches and radio booths for home and visitors, and a control room for the video board. Two separate VIP/Hospitality suites are located on the 3rd floor along with a small kitchen and a video balcony. Restrooms are located on both floors.

Concession Stands and Restrooms

Four concession stands are located at each corner of the stadium overlooking the field. Men's and women's restroom facilities are located at each corner of the stadium behind the concession stands. Family restrooms are located at each corner of the stadium as well.

Entry Gates

Four entry gates/ticket booths are located at each corner of the stadium. Northwest (A) and Southwest (B) ticket booths are located on the home side (press box). Northeast (D) and Southeast (C) ticket booths are located on the visitor side.

Parking

The stadium has 1,267 paved parking spaces with additional parking spaces adjacent to the stadium. There are 34 handicap parking spaces. Bus parking spaces are available for teams and support groups. Parking lot will open two (2) hours before game time.

Stadium Regulations

Dressing Rooms

Dressing rooms will open 2 ½ hours prior to game time. Towels are not provided. MISD is not responsible for any articles left in the dressing room before, during, or after the game.

Ticket Gates

Ticket gates will open one (1) hour prior to game time. There are no in-and-out privileges. Re-entry requires the purchase of a new ticket. MISD Multi-Purpose Stadium is a tobacco and vape free facility and its use is prohibited.

Press Box (Varsity Games Only)

Press box will open 1 ½ hour prior to game time. Admittance to press box is by PASS ONLY. All passes are acquired from MISD in advance.

Radio/press box must call in advance to have passes waiting in elevator lobby.

Playing Field

*No metal cleats may be worn on the turf.

*Use of tobacco, sunflower seeds, and gum are prohibited.

*Only water can be used on the field. No colored drinks, such as Gatorade may be used on the field.

*Absolutely no glass bottles, cans or food allowed on the field.

*All equipment, such as training tables and fans must have a protective base.

*No live mascots are allowed.

*Band props must not mark or scar the field – chairs, ladders, etc.

*All signs must be vinyl. The use of painted, paper signs is prohibited.

***Confetti, balloons, streamers, baby powder, flour, or similar items requiring detailed clean-up are not permitted in the stadium.**

*Only personnel with sideline passes can be on the field. These are obtained in advance through the athletic office.

*Spectators are not allowed on the field before or after the game.

*No noise makers of any kind may be used on the field.

*No outside music/PA systems allowed in the Stadium.

Stadium Bleachers

Climbing over the rails from the bleachers to the field is not permitted. Spirit signs must be made of vinyl and attached by zip ties to the stadium railing. Taping of signs to any stadium structure will not be permitted. There is absolutely no cross over by spectators from home to visitor or vice versa.

Entry

Varsity games: Visitors will enter from the East side at Gates C & D. Home team will enter from the West side at Gates A & B.

Sub-Varsity games: Everyone will enter from the West side at Gate A. Visitors will be required to cross over to the visitor stands.



Midlothian ISD Facility Rules

1. No loitering. This policy is designed to enhance crowd control and safety. All spectators will need to be seated during the course of any event.
2. Alcohol, tobacco, vaping, and firearms are prohibited by law on school property.
3. Coolers, ice chests, beverage or glass containers are not allowed. Absolutely NO open fires or grills. No lawn chairs allowed at MISD Multi-Purpose Stadium.
4. Clear Bag Policy in effect. See Guidelines.
5. Patrons who leave the venue will not be allowed to re-enter without the purchase of another ticket.
6. *Animals, bicycles, skateboards, frisbees, roller blades, and balls of any type are not allowed in the venue. *FBA (Legal) Service animals only will be permitted.
7. Authorized personnel only will be admitted onto the field or court before, during, or after the game. This applies to restricted areas at all venues.
8. No outside food or beverage is allowed in the venue, except one sealed clear plastic bottle of water. **NO PERSONAL TUMBLERS ARE ALLOWED.**
9. No outside food or drink is allowed to be sold, including inside the venue or in the parking lots or street. No outside food may be given away for advertising purposes at any venue.
10. Confetti, balloons, streamers, baby powder, flour, or similar items requiring detailed clean-up are not permitted in the venue.
11. No air horns, whistles, laser pointers or electronic sound devices are allowed in the venue.



Midlothian ISD Clear Bag Guidelines

Approved Bags

CLEAR TOTE

Plastic, vinyl or PVC and do not exceed 12"x6"x12"



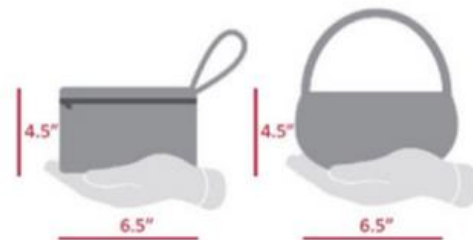
PLASTIC STORAGE BAG

Clear, one (1) gallon, re-sealable



SMALL CLUTCH PURSE

Approximately the size of a hand with or without a handle or strap. No larger than 6.5" and 4.5" with or without a handle or strap.



- Clear tote- plastic, vinyl or PVC bags that do not exceed 12" x 6" x 12"
- Plastic storage bag -- Clear one (1) gallon, resealable
- The only non-clear bags permitted are small bags (with or without a strap) no larger than the size of a hand
- Exceptions are made for credentialed media, medical necessity, and diaper bags

Non-Approved Bags



Backpack



Camera Bag



Purse



Fanny Pack



Drawstring Bag

- All purses, bags or containers larger than a small clutch
- Backpacks
- Briefcases
- Camera Bags
- Fanny Packs
- Computer Bags
- Coolers
- Luggage
- Drawstring Bags

MISD ATHLETIC OFFICE

GATED

JAGUARS

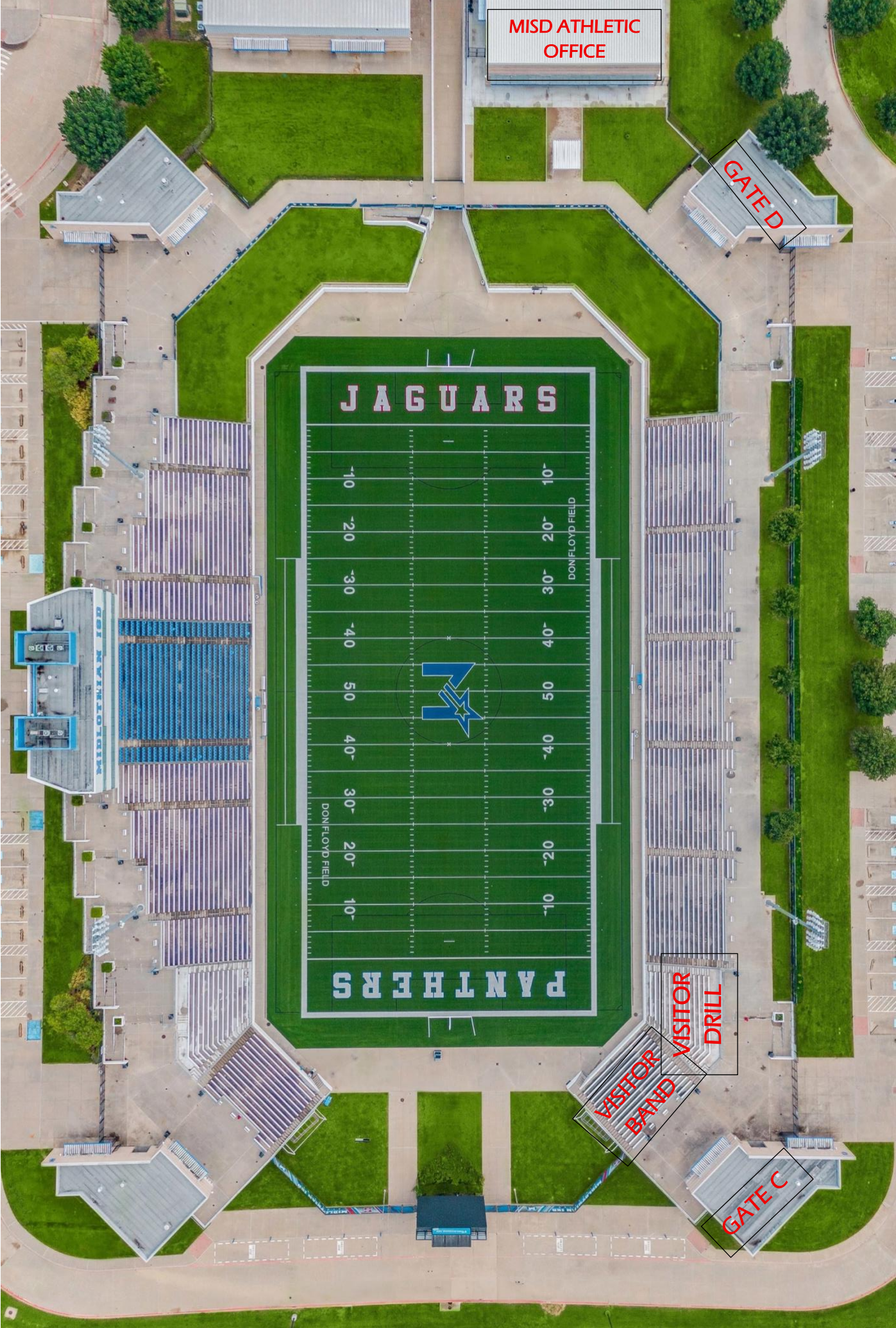
10- 20- 30- 40- 50- 40- 30- 20- 10-
DON FLOYD FIELD DON FLOYD FIELD

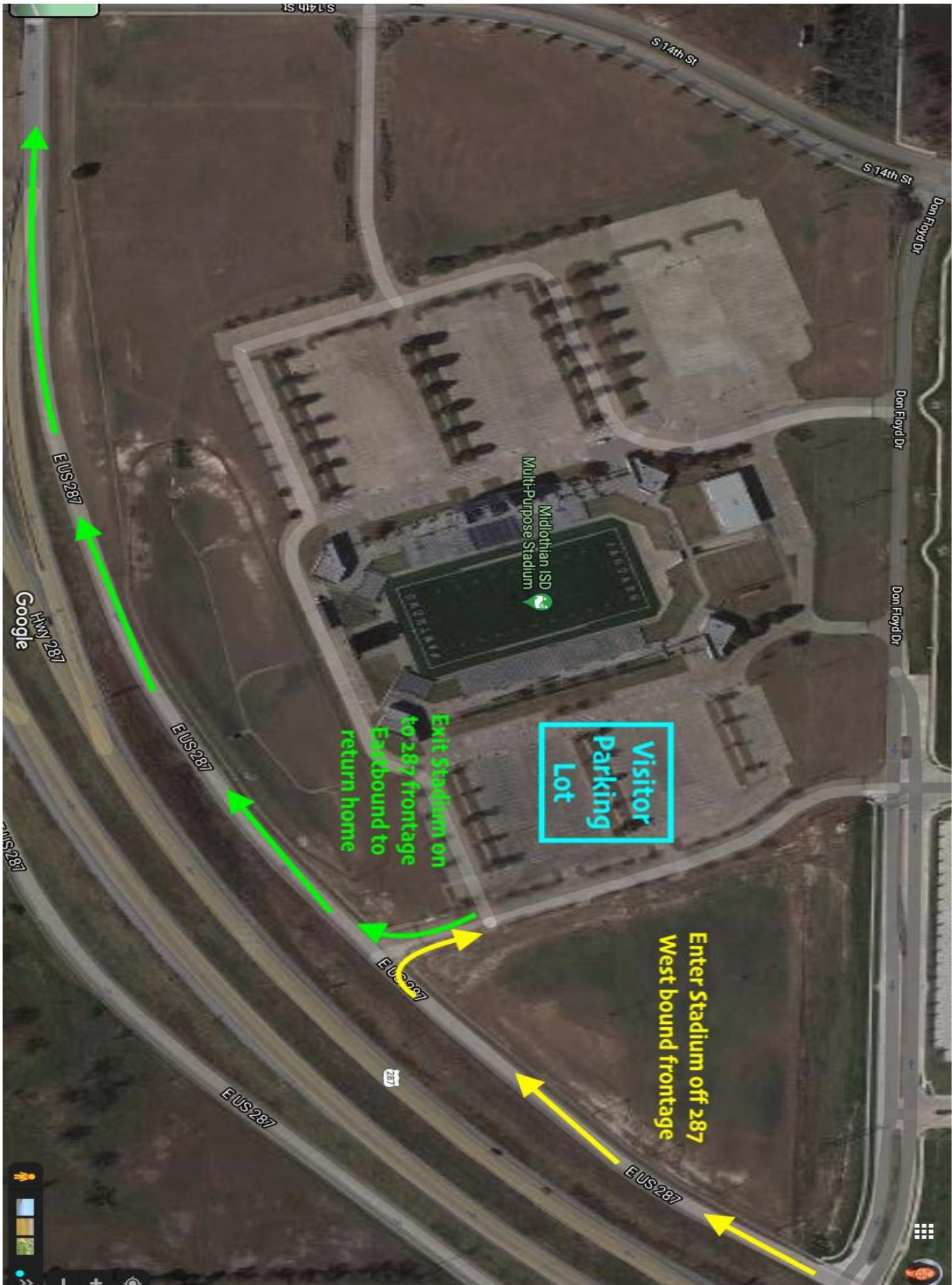


PANTHERS

VISITOR BAND VISITOR DRILL

GATE C





Google



Exit Stadium on
to 287 frontage
Eastbound to
return home

Visitor
Parking
Lot

Enter Stadium off 287
West bound frontage

EUS 287

EUS 287

EUS 287

EUS 287

EUS 287

S 14th St

S 14th St

Don Floyd Dr

Don Floyd Dr

Hwy 287

287